



RESIDENTIAL ESTATE AGENTS
PROPERTY LETTING & MANAGING AGENTS
VALUERS & PROPERTY CONSULTANTS
CHARTERED SURVEYORS

01722 336422
www.hwwhite.co.uk WEB



Manor Garden, Durrington

£2,000 PCM

2 Manor Garden, Durrington, Salisbury, Wiltshire, SP4 8AG

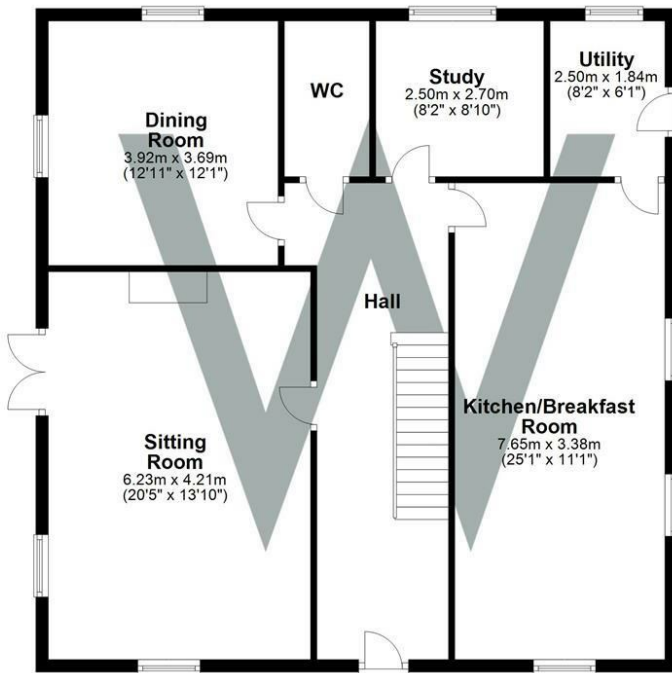


| Energy Efficiency Rating | | Current | Potential |
|---|--|-------------------------|-----------|
| Very energy efficient - lower running costs | | | |
| (92 plus) A | | | |
| (81-91) B | | | |
| (69-80) C | | 74 | 82 |
| (55-68) D | | | |
| (39-54) E | | | |
| (21-38) F | | | |
| (1-20) G | | | |
| Not energy efficient - higher running costs | | | |
| England & Wales | | EU Directive 2002/91/EC | |

A substantial four double bedroom, three bathroom detached house in the popular village of Durrington. The property benefits from having a multitude of redecoration works undertaken in recent months, which includes new kitchen cupboard doors, front door repainted and a major overhaul of the rear garden. The property is situated within walking distance of a local Sainsbury's shop, and a secondary school and benefits from excellent public transport links to both Amesbury and Salisbury City Centre. Other accommodation includes a large entrance hall, with access to the ground floor rooms which include a lounge with french doors to the garden, a separate dining room, study, fitted kitchen/breakfast room which comprises, work surfaces, wall units, base units and drawers, inset sink and drainer, with integrated white goods including fridge, freezer, dishwasher and electric oven and new induction hob. Windows to front and side aspects. Door to utility room with plumbing and space for washing machine and tumble dryer and door to outside. Ground floor cloakroom. Upstairs accommodation includes a large landing with doors leading to all four double bedrooms, two of which benefit from en suite facilities as well as ha
re
coi

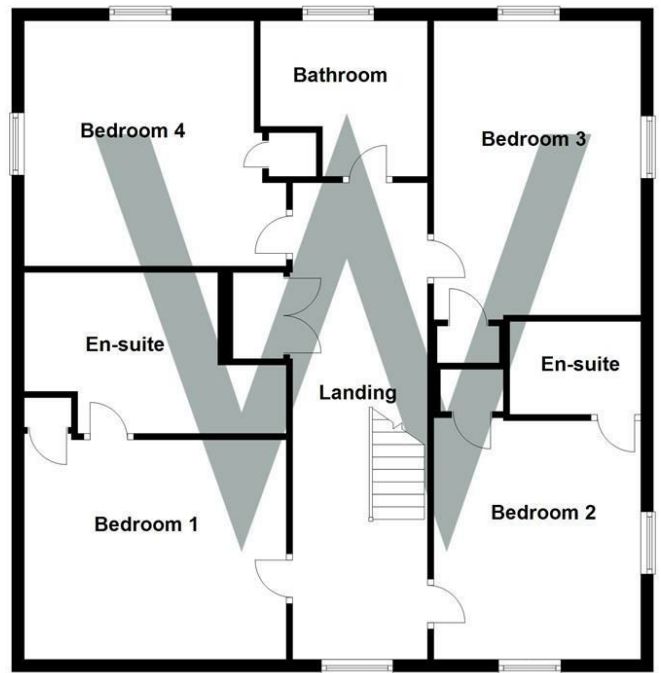
Ground Floor

Approx. 101.5 sq. metres (1092.8 sq. feet)



First Floor

Approx. 101.1 sq. metres (1088.7 sq. feet)



Total area: approx. 202.7 sq. metres (2181.5 sq. feet)



01722 336422

47 Castle Street, Salisbury SP1 3SP 01722 320600 FAX
residential-sales@hwwhite.co.uk E-MAIL www.hwwhite.co.uk WEB